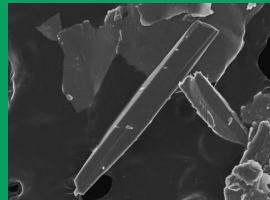
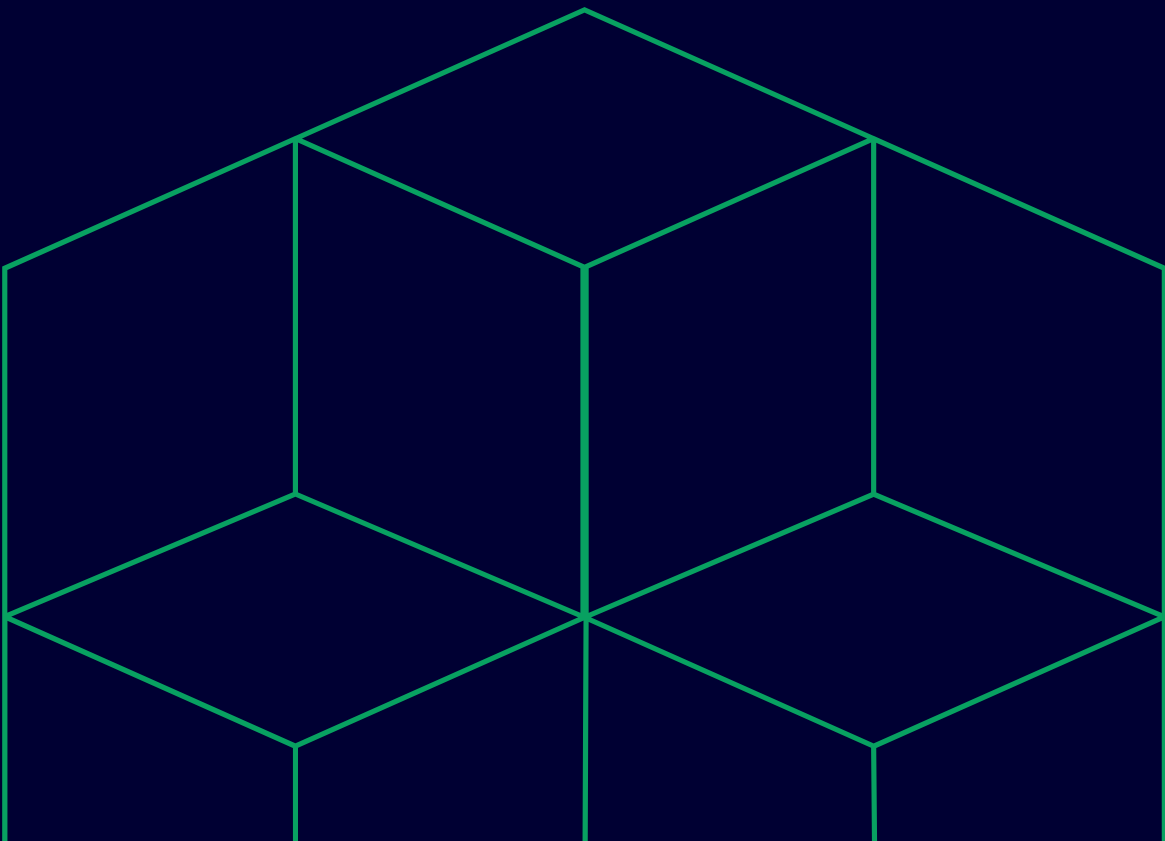


RJ Lee Group

2025 Laboratory Testing Guide



Asbestos Analytical Services



Asbestos Analytical Services - Laboratory Testing Guide 2025

Transmission Electron Microscopy

Type of Analysis/Service	Turnaround (Days)
AHERA Clearance Samples - Air (Submitted in sets of five)	5
NIOSH 7402 – Air	5
NIOSH 7402 – Air w/RCF Fibers	5
ISO 10312 (direct) - Air	10
ISO 13794 (indirect) - Air	10
ISO 22262-2 – Bulk	10
ASTM D5756 – Bulk	10
ASTM – Dust 5755 - Microvac	5
ASTM D6480 – Surface dust wipe	5
USEPA 100.1 - Non-potable water	5
USEPA 100.2 - Drinking Water	5
Chatfield SOP-1988-02/NY ELAP 198.4 (NOB) - Bulk	5
Sludge or Mud sample: (weight percent)	10
USAEPA Draft Contract 68-02-3266 (Yamate) - Level I	5
USAEPA Draft Contract 68-02-3266 (Yamate) - Level II	5
USAEPA Draft Contract 68-02-3266 (Yamate) - Level III	

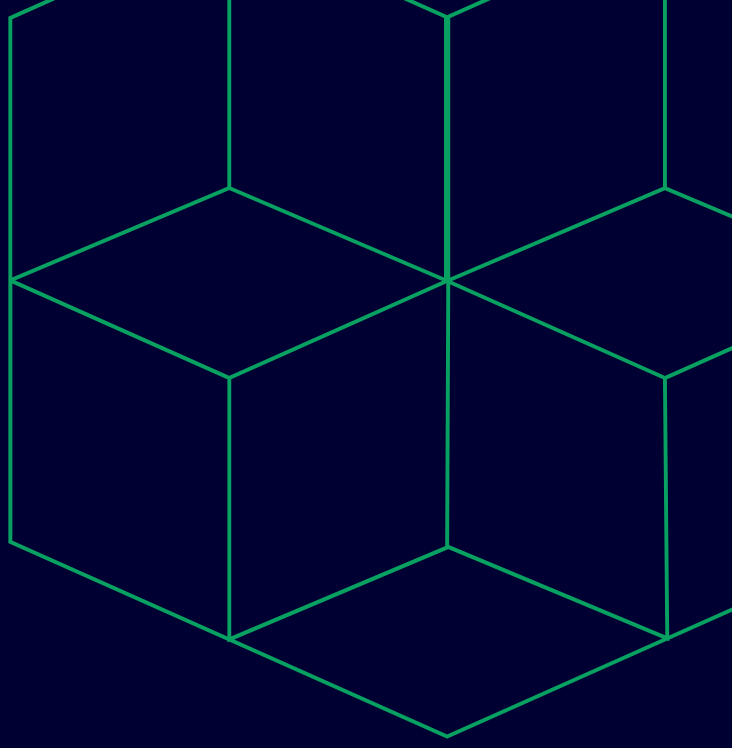
Polarized Contrast Microscopy (PCM)

Type of Analysis/Service	Turnaround (Days)
NIOSH 7400 – Air	5
NIOSH 7400 – B rules	5

Asbestos Analytical Services - Laboratory Testing Guide 2025

Polarized Light Microscopy (PLM)

Type of Analysis/Service	Turnaround (Days)
EPA 600/R-93/116:	
* Bulk (visual estimate) - per layer - EPA/600/R-93/116 (1% - Visual Est) * 40 CFR Part 763 Appendix E to Subpart E of 763 * Additional charges for multiple layered samples will apply.	5
* Untreated 400 Point Count - EPA/600/R-93/116 (0.25% - 400 ptct)	10
* Treated 400 Point Count - EPA/600/R-93/116 (0.25% - 400 ptct with gravimetry)	10
* Untreated 1000 Point Count - EPA/600/R-93/116 (0.1% - 1000 ptct)	10
* Treated 1000 Point Count - EPA/600/R-93/116 (0.1% - 1000 ptct with gravimetry)	10
* Soil/Rock/Raw Materials/Debris - NYELAP 198.6 - Non-Friable materials	10
*Naturally Occurring Asbestos In Soil, Rock or Raw Materials.	
*Additioanl Processing charges may apply.	
CARB 435 – serpentine aggregate	10
ISO 22262-1 -Bulk -Quantintative -qualitative determination of asbestos in commercial bulk materials	10
ISO 22262-2 -Bulk -Quantintative - Quantitative determination of asbestos by gravimetric and microscopical methods	10
Fly ash determination in sediment (OPT.023)	10
Component Characterization / Mineral ID	10
NYELAP 198.1 – Friable materials	5
NYELAP 198.6 – Non-Friable materials	5



RJ Lee Group

800 Presque Isle Drive
Pittsburgh, PA 15239
clientrelations@rjleegroup.com