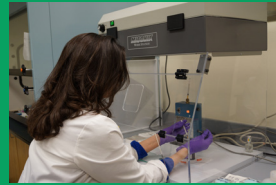
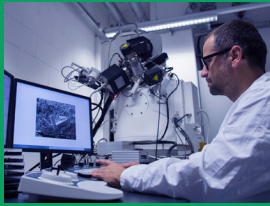
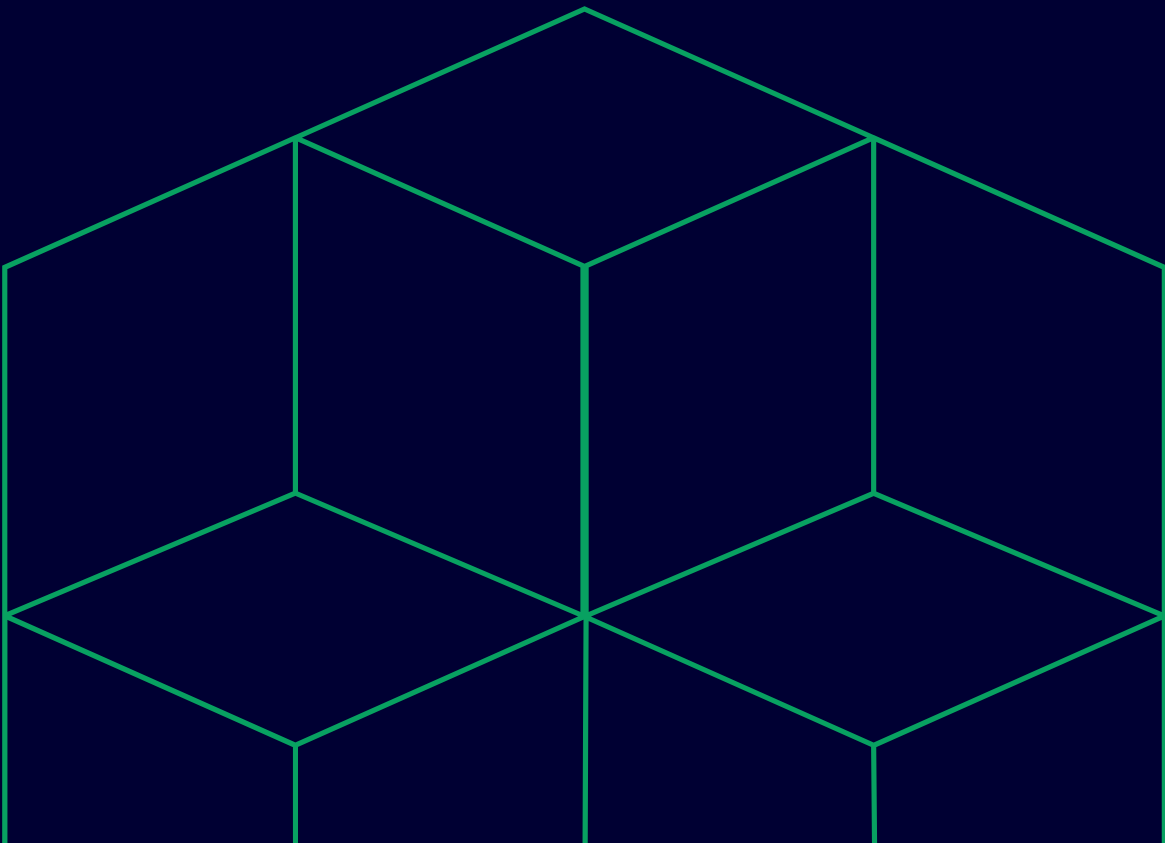


RJ Lee Group

2025 Laboratory Testing Guide



Columbia Basin Analytical Lab



Columbia Basin Analytical Lab - Laboratory Testing Guide 2025

Columbia Basin Analytical Laboratories is a full-service analytical laboratory specializing in environmental and industrial hygiene analyses. Our subject matter experts have over 95 years of experience with diverse scientific backgrounds that include geology, environmental engineering, microscopy, and water chemistry, as well as development of scientific instrumentation.

In addition to routine analyses, this substantial knowledgebase enables us to offer consulting services to design and carry out studies tailored to our clients' needs. We are also approved by Washington state (an NRC/EPA agreement state) to handle environmentally and radiologically contaminated/ hazardous soils at our laboratory facilities. We are also approved by Washington state (an NRC/EPA agreement state) to handle environmentally and radiologically contaminated/hazardous soils at our laboratory facilities.

Geotechnical Soils Analysis is part of our core business at our Columbia Basin Analytical Laboratory in Pasco, WA. We specialize in measuring the physical properties of soil for the geotechnical, environmental, construction and mining industries. We strive to deliver the most accurate testing results to clients in a timely manner.

Columbia Basin Analytical Laboratory is also approved by Washington state (an NRC/EPA agreement state) to handle environmentally and radiologically contaminated/hazardous soils at our laboratory facilities.

Columbia Basin Analytical Lab - Laboratory Testing Guide 2025

EXPEDITED TATs - Chemistry and Asbestos (Standard TAT = 10 day)	
Same Day TAT	300% Surcharge of Standard TAT
1 Day TAT	200% Surcharge of Standard TAT
3 Day TAT	100% Surcharge of Standard TAT
5 Day TAT	50% Surcharge of Standard TAT
EXPEDITED TATs - Geotech (Standard TAT = 20 day)	
5 Day TAT	200% Surcharge of Standard TAT
10 Day TAT	100% Surcharge of Standard TAT
Other Fees	
Disposal Fee	4% charge applied to Total
Shipping and outsourcing fee	15% charge applied to relevant samples
RAD Facility Charge	150% Surcharge on each sample
RAD Disposal Fee	25% charge applied to Total
Saturday & Sunday	100% Surcharge in additional to any TAT surcharge. This applies to request to have samples received on the weekend.
If work order is less than \$150	15\$ fee applied to each work order (call to discuss exceptions)

Standard Consulting		
Technician	per hour	\$120
Jr Scientist	per hour	\$150
Sr Scientist	per hour	\$175
Principal / Director	per hour	\$200

CONNECT WITH AN EXPERT
1.800.860.1775 | www.rjleegroup.com



Columbia Basin Analytical Lab - Laboratory Testing Guide 2025

Testing		
Parameter/Analyte	Test Method(s)	Unit Price (for 10-day Turnaround time)
Beryllium (Filters and Wipes)	NIOSH 7303 mod	\$75
Beryllium (Bulks)	NIOSH 7303 mod	\$111
Dimethylamine	OSHA 34 mod	\$155
Ethylamine	OSHA 36 mod	\$155
Methylamine	OSHA 40 mod	\$155
Formaldehyde and Other Carbonyl Compounds	EPA TO-11A	\$170
Nitrosamines	NIOSH 2522 mod	\$431
Metals (Filters and Wipes) First Metal	NIOSH 7303 mod	\$75
Metals (Filters and Wipes) Additional Metals	NIOSH 7303 mod	\$25
Metals (Bulks) First Metal	NIOSH 7303 mod	\$75
Metals (Bulks) Additional Metals	NIOSH 7303 mod	\$25
Single Metal (ICP-MS) Water Testing, example: Lead		\$55
Conductivity		\$31
pH - Chemistry		\$24
pH - Geotech (ASTM G51)		\$55
Turbidity		\$31
Alkalinity		\$52
Ammonia by IC (OSHA ID-188/NIOSH 6016)		\$88
Total Dust		\$43
Hexavalent Chromium		\$83
TO-15 or TO-17 analysis/report of 5 analytes		\$275
ICP-MS (6020)		\$75 for digestion and first metal \$25 per additional metal
PTR-MS non-targeted (20 dat TAT)		\$2,500

CONNECT WITH AN EXPERT
1.800.860.1775 | www.rjleegroup.com

RJ Lee Group 

Columbia Basin Analytical Lab - Laboratory Testing Guide 2025

Testing		
Parameter/Analyte	Test Method(s)	Unit Price
Anions	EPA 300.0	\$220
Metals Analyses	EPA 6020 / EPA 200.8	\$75 for first \$25 for each additional
Analysis of Halogenated Hydrocarbons	NIOSH 1003 mod	\$170
Analysis of Ketones:	NIOSH 1300 mod/ NIOSH 1301 mod/ NIOSH 2553/ NIOSH 2555	\$235
Analysis of Nitriles		\$147
Analysis of Alcohols		\$180
Esters 1		\$242
Analysis of Aliphatic Hydrocarbons		\$305
Analysis of Aromatic Hydrocarbons		\$198
Determination of Volatile Organic Compounds in Ambient Air Using Active Sampling on to Sorbent Tubes	EPA TO-17	\$475
Determination of Volatile Organic Compounds (VOCs) in Air Collected in Specially-Prepared Canisters	EPA TO-15	\$375
Phthalates	EPA 8270E	\$240
ACID Analyses	IC NIOSH 7907	\$185
Semi-volatile Organic Compounds	EPA 625.1	\$330
Pesticides	EPA 608	\$210
PCBs	EPA 8082	\$270
Low Level PAH	EPA 8270E SIM	\$460

CONNECT WITH AN EXPERT
1.800.860.1775 | www.rjleegroup.com

RJ Lee Group 

Columbia Basin Analytical Lab - Laboratory Testing Guide 2025

Geotechnical Analysis - 20 business day TAT		
Parameter/Analyte	Test Method(s)	Unit Price
California Bearing Ratio	ASTM 1883	\$665
Proctor, moisture density	ASTM D698 / D1557	\$292
"Unconfined Compressive Strength (not including prep)"	ASTM D2166	\$135
Hydraulic Conductivity of Saturated Porous Materials (not including prep)	ASTM D5084	\$440
Particle Size in Soil/Sieve and Hydrometer	ASTM D422 / D6913, D7928	\$255
Permeability of Granular Soils, Constant Head, Rigid Wall	ASTM D2434	\$440
Soil Density	ASTM D2937/D7263	\$155
Specific Gravity, Fine Soil	ASTM D854	\$175
Specific Gravity, Coarse Solids	ASTM C27	\$175
Specific Gravity of Pigments	ASTM D153	\$260
Atterberg	ASTM D4318	\$268
Carbonate Content in Soil	ASTM D4373	\$185
Soil Potential	ASTM D5298	\$145
Moisture Content	ASTM D2216	\$34
pH	ASTM G51/D4972	\$55
ORP	ASTM G200	\$55
Resistivity	ASTM G57/G187	\$65
Soil Corrosivity package (EPA 300, pH, Resistivity)	EPA 300, G51, G57/ G187	\$250
Qualitative Sulfide	Canadian Conservation Institute (CCI) Notes 17/5	\$55
Visual-Manual Identification of Soils	ASTM D2488-09a	\$50
Licensed Geologist - Geologic Logging of Soils/customer specific method		\$150

CONNECT WITH AN EXPERT
 1.800.860.1775 | www.rjleegroup.com

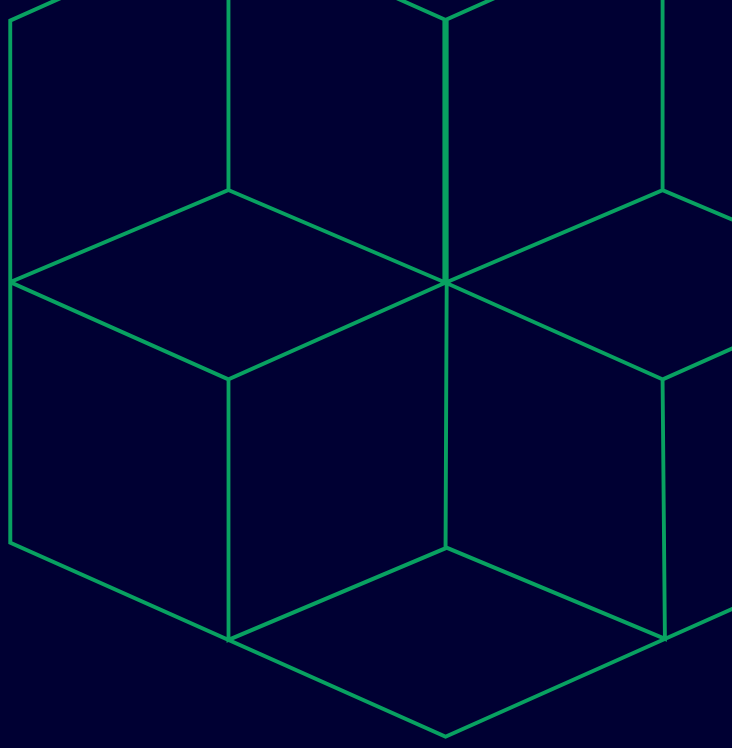


Columbia Basin Analytical Lab - Laboratory Testing Guide 2025

Geotechnical Sample Prep methods		
Proctor/Compaction Prep	Per mold	\$75
Cutting	Per sample	\$75
Adjusting sample moisture	Per moisture point	\$60
Sample crushing/sieving	Per sample	\$60
Sample splitting for other tests	Per split	\$30

RCRA Metals - EPA Methods	
RCRA 8 Metals	\$250

Asbestos	
Asbestos 8-16 hr TAT (independent of layers)	\$88
Asbestos by PCM (per layer)	\$29
Asbestos by PLM (per layer)	\$36



RJ Lee Group

2710 N. 20th Ave.
Pasco, WA 99301
509-792-1955

clientrelations@rjleegroup.com